

Gioacchino Rossini
La Cenerentola Overture

CONTRABASSO

Maestoso

p *ff* *ff* *ff* *ff* *ff* *ff* *ff* *ff* *ff*

pizz *arco* *Allegro vivace*

1 2

BASS

7

p

cresc.

3

ff

ff

ff

ff

4

f *smorz.*

Pizz.

1

p

1

p

1

p

1

p

BASS

Musical staff with bass clef, key signature of two flats, and a sequence of eighth notes.

5 ARCO

Musical staff with bass clef, key signature of two flats, and a sequence of eighth notes with dynamic markings.

pp

Musical staff with bass clef, key signature of two flats, and a sequence of eighth notes with dynamic markings.

Musical staff with bass clef, key signature of two flats, and a sequence of eighth notes with dynamic markings.

cresc. a poco a poco

Musical staff with bass clef, key signature of two flats, and a sequence of eighth notes with dynamic markings.

Musical staff with bass clef, key signature of two flats, and a sequence of eighth notes with dynamic markings.

f

Musical staff with bass clef, key signature of two flats, and a sequence of eighth notes with dynamic markings.

6

Musical staff with bass clef, key signature of two flats, and a sequence of eighth notes with dynamic markings.

ff

Musical staff with bass clef, key signature of two flats, and a sequence of eighth notes with dynamic markings.

Musical staff with bass clef, key signature of two flats, and a sequence of eighth notes with dynamic markings.

p

Musical staff with bass clef, key signature of two flats, and a sequence of eighth notes with dynamic markings.

ff

p

Musical staff with bass clef, key signature of two flats, and a sequence of eighth notes with dynamic markings.

ff

7

12

BASS

1

p

f *sf*

7

1

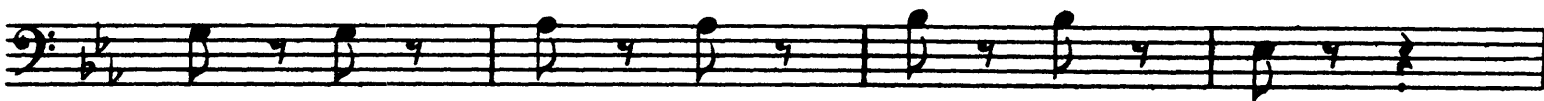
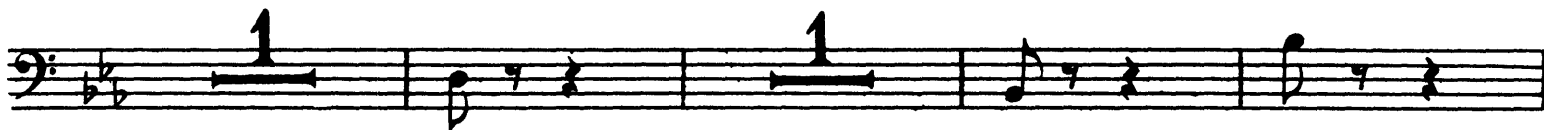
p

cresc.

8

ff

BASS



BASS

